

Pressure transmitter

Datasheet

Pressure transmitter tested and approved by Val Controls for our IDC24 range.

When using the IDC24 for advanced diagnostic, the performance of the connected sensors does affect the system overall performance. To get the best possible performance, Val Controls recommend using Val Controls approved pressure transmitters. These pressure transmitters have been tested by Val Controls in laboratory and in the field, so we can guarantee a perfect performance from the system.

Input

Mechanical connection : G1/4 A DIN 3852
 Pressure range : 0-6; 16; 40; 60; 100; 250; 400; 600bar

Output

Output signal : 4-20mA

Certification for use in hazardous area

EX type : Flame proof
 ATEX Ex-identification : II 2G Ex d IIC T6, T5
 IECEx Ex-identification : Ex d IIC T6, T5 Gb
 Ambient temperature : T5/T6 -20°C to 80/60°C

Electrical connection terminal box

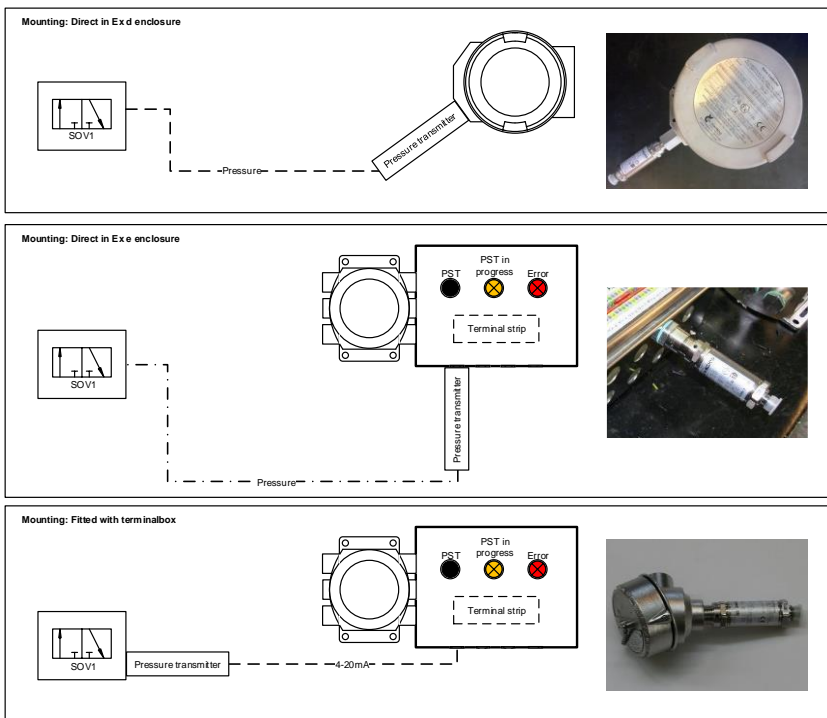
Gland entries : 1 x M20 (no glands included)
 Terminals : 0.2 - 2 mm²

Enclosure: Material and construction

Dimensions : HxW 99x29mm
 Dimensions with terminal box : LxW 188x90mm
 Weight : Approx. 300 g
 Weight with terminal box : Approx. 1.500 g
 Enclosure : SS316L
 Terminal box : SS316
 Ingress Protection : ≥ 40 bar IP69K; ≤ 16 bar IP65

Model selector

PT	-	A	B	0	0	0
A	Pressure range					
0006	0-6 bar					
0016	0-16 bar					
0040	0-40 bar					
0060	0-60 bar					
0100	0-100 bar					
0250	0-250 bar					
0400	0-400 bar					
0600	0-600 bar					
B	Mounting					
1	Direct in Ex d enclosure – Only F model					
2	Direct in Ex e enclosure					
3	Fitted with terminal box					



DCS-PD-001-06 - Subject to modifications. We are not responsible for misprints.