

Val Controls Diagnostic Centre PDA

PDA designed for communication with Val Controls IDP24 using Bluetooth in hazardous areas

Part no.: 121010

General specifications

This high performance industrial PDA is very unique since it is EX classified. With the compact, ergonomic and robust design it is very easy to operate.

The software platform is Windows mobile 2005 and is designed to communicate with a Windows based PC running Val Controls Diagnostic Centre.

The software transfer data to this PDA from our IDP24 (Intelligent Diagnostic Positioner) by Bluetooth. With this product valve information and signatures can be transferred in a fast, safe and trustable way. After having retrieved the diagnostic and signatures to the PDA, it is very easy to store all the information on a PC.

It is also possible to start tests, control and monitor the state of the valve using the PDA.

Certification for use in hazardous area according to ATEX 94/9-EC

EX type	: Intrinsically safe
Ex-identification	: Ex II 2 G Ex ia IIC T4
EC type examination certificate	: ZELM 04 ATEX 0200
Ambient temperature	: -20°C.....+50°C

Enclosure: Material and construction

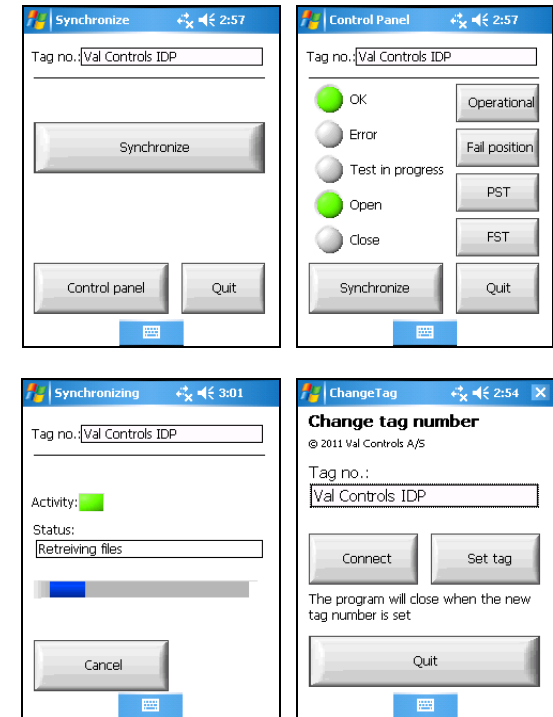
Dimensions	: LxHxW 178x89x49mm
Weight	: 880g
Enclosure	: Antistatic non-corroding
Ingress Protection	: IP65
Drop protection	: 1m onto concrete

Power

Charger	: 100-240V 50-60Hz
Connection	: 4 changeable power plugs

Software and manuals

The PDA comes with the VDCDC PDA software preinstalled on the unit.
Software updates and manuals are available free of charge at www.valcontrols.com



Parts included

- 1 x Ex PDA
- 1 x Docking station and cables
- 2 x microSD-USB card reader
- 2 x Antistatic display protection
- 2 x Spare stylus
- Software preinstalled on PDA

All this is supplied in an instrument case for harsh environments for best protection of the equipment.

Note: The PDA can only be used if the IDP24 is fitted with a Bluetooth module.

